

Middle East

Our integrated team was commissioned to provide full principal consultancy services for Doha's iconic Al Bidda Tower in Qatar. We provided seamless delivery of the following:

- Concept design & design management
- Design development including structural, MEP, civil & landscape design
- Construction documentation & tender process management
- Contract administration & site supervision
- Post contract management & certification

GHD was honoured at The Arabian Property Awards 2010 in association with Bloomberg Television for this stunning 45-storey twisting skyscraper. The tower's striking design has captured the attention of international visitors and locals alike since its unveiling in early 2010.

The floor plan rotates at each level as the tower rises which, combined with a diamond-shaped glass façade, gives the impression of movement and life. Additionally, the innovative design means that the leasable floor space increases in size towards the top of this 90,000 sqm commercial building.



About GHD

GHD is one of the world's leading engineering, architecture and environmental consulting companies.

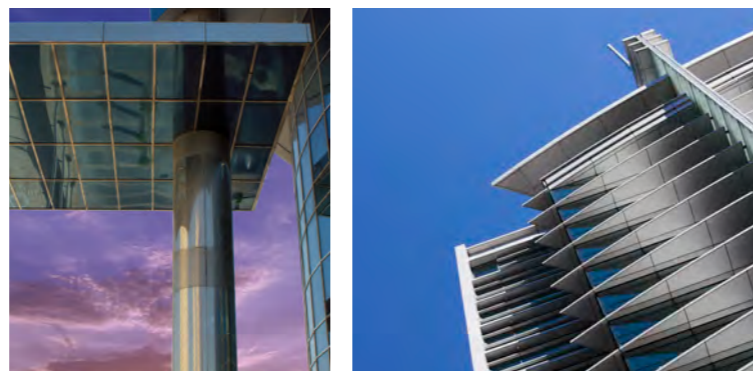
Established in 1928, GHD employs more than 6500 people across five continents and serves clients in the global markets of water, energy and resources, environment, property and buildings, and transportation.

Wholly-owned by its people, GHD is focused on client success. Our global network of engineers, architects, planners, scientists, project managers and economists collaborate to deliver sustainable outcomes for our clients and the community. Our core values of Teamwork, Respect and Integrity help create enduring relationships that deliver exceptional results.

GHD is committed to sustainable development, safety and innovation. We care for the wellbeing of our people, communities and the environments in which we operate.

GHD operates under a Practice Quality Management System, ISO 9001:2008 and an Environmental Management System, ISO 14001:2004 which are certified by Lloyd's Register Quality Assurance.

For more information, visit www.ghd.com



GHD Property & Buildings

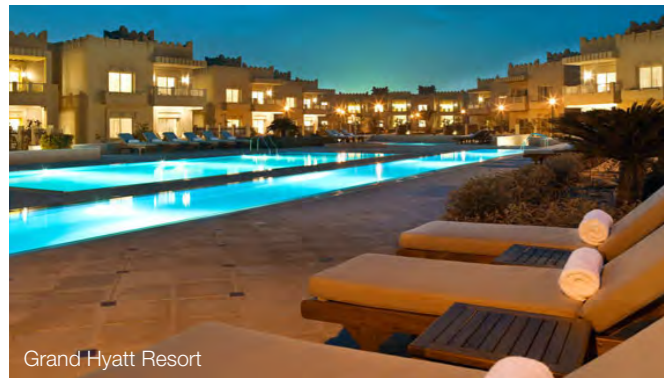


www.ghd.com

WATER | ENERGY & RESOURCES | ENVIRONMENT | PROPERTY & BUILDINGS | TRANSPORTATION

“The continued development and regeneration of our communities requires a sophisticated planning, design and growth management approach. We deliver seamless solutions that incorporate planning, architecture, economics and engineering to help you maximise return on investment.”

Paul Morris - Global Market Leader Property & Buildings

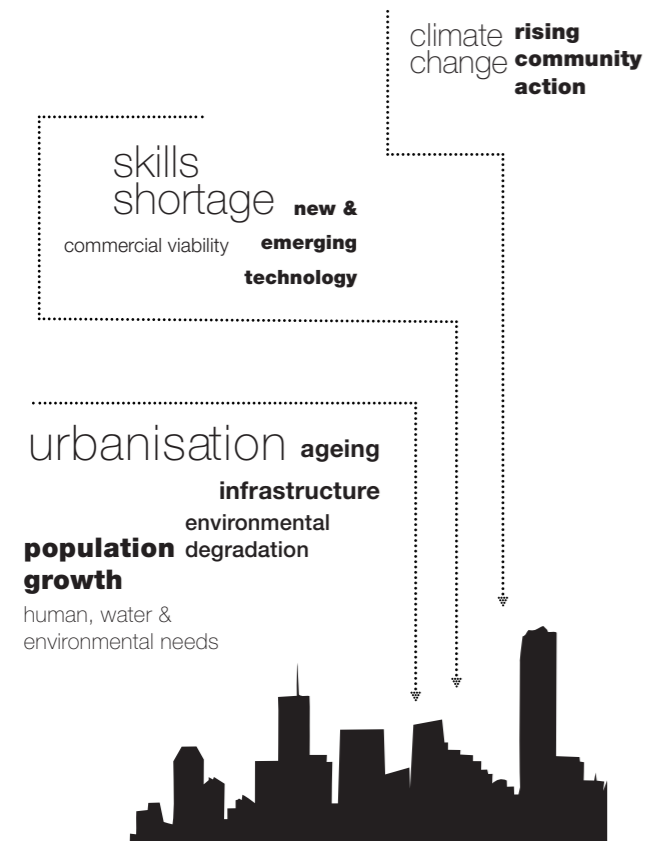


Grand Hyatt Resort

Our clients seek out robust solutions - those that are visually impressive, economically viable, and environmentally sustainable.

Decision-making protocols and complementary design principles must be established early in a project to satisfy the goals of all stakeholders. Through integrated design, GHD has become a respected leader in the built environment.

Key industry influences



Our approach

Our attention to cost and risk management generates both design-focused, technically savvy results, delivered on time and on budget. We have a rich history in outstanding design services in the following market segments:

- Defence
- Social infrastructure & indigenous services
- Communities
- Sustainable cities
- Urban development
- Commercial & retail
- Residential & hospitality
- Transport facilities
- Industrial & resource facilities

We aim to create spaces which have a visual signature, generate diverse responses, challenge design parameters, and most importantly, meet the needs of our client and communities alike. Our design philosophy is underpinned by the consideration of human, environmental and economic concerns.

Services

Our integrated teams work in a range of market segments and deliver the following service across the entire life cycle of your project:

- Architecture, landscape architecture & interior design
- Civil engineering & land development
- Electro-mechanical engineering
- Structural engineering
- Geotechnical engineering
- Hydraulic & fire engineering
- Environmental & sustainability services
- Project, asset & facility management
- Planning services
- Security
- Integrated Logistics Support
- Urban economics
- Spatial sciences
- Stakeholder engagement

Why we are different

With GHD, you become part of a creative and collaborative approach that produces innovative ideas, moving beyond the built form to enhance the true meaning of your space. You will arrive at a focused solution, tailored explicitly to your needs, incorporating experience and design excellence with

community consideration. Our designs incorporate inspiration, flair, enthusiasm and aesthetic function, and we'll communicate with you, face to face, at each stage of the project life cycle. With more than 100 offices across the globe, it's fair to say we have the talent and depth to enable an informed, objective approach to your project challenges - our architects, engineers, planners, economists and environmental scientists will collaborate with intent to make your project a success.

Integrated Project Delivery (IPD)

The most advanced players in industry now demand IPD. This uses business structures, practice, and processes to collaboratively draw on the talent and insight of each participant in the design, construction and fabrication process. Mobilised when the project is first conceptualised, the integrated process continues throughout the entire life cycle of the facility.

GHD applies the latest software in Building Information Modelling (BIM) to design, visualise, analyse and document its projects. The application of REVIT Architecture, Structure, MEP and Robot Structural Analysis allows a fully integrated model to capture each element of your project from concept through to completion. BIM allows us to tell you when things may not work (clash detection) and ensures each of our technical disciplines work together (phasing) to create optimal outcomes. No need to take the term 'BIM' literally - 'Building' may include buildings, structures, bridges, public infrastructure, mining, marine and plant engineering projects. 'Modelling' doesn't mean the most attractive people we can find - it's about a multi-dimensional approach to project growth and development.

Sustainable development

Balancing lifestyle with resource efficiency and sustainable performance requires comprehensive planning. The results must be scalable - from specific buildings right through to city-wide solutions. We've established a common set of social and environmental performance objectives for building design. This allows a consistent approach to the design process, integrating architecture and engineering to produce innovative, high performing spaces. We consider performance indicators for all projects, often using those established by the client via LEED®, Green Star, NABERS and/or Estidama rating schemes. Our approach creates productive and healthy environments that are a pleasure to inhabit, simultaneously improving life cycle resource efficiency and maximising performance.

Where we've done it well

Australia

The ACT Government-owned National Convention Centre, Canberra was originally opened in 1989. It was one of the earliest specialist convention and exhibition facilities constructed in Australia. The inferior state of repair and poor functionality of the centre approaching the end of its life cycle was contributing to a declining market share of major conventions. The project to the ACT Government and focussed on improving marketability through

achieving value for money in addressing the sense of arrival and place, venue flexibility, delegate amenity and visitor experience. GHD was appointed architect, engineering and environmental consultant to the ACT Government for the scoping, prioritising, design, documentation and construction of the facility.

China

GHD is collaborating with Shimao Group to create a resort inspired by China's rich heritage and reflecting a new focus on sustainable development. Set in the Dalian region, Shimao Dalian Carnival is a development where forests and mountains meet water, reflecting the area's natural beauty and the cultural heritage of the Chinese jade dragon.

Shimao's ambitious plan requires the enlargement of an artificial island to about 1155 hectares and building on reclaimed land. The island is in the shape of the symbolic Chinese dragon, which is associated with strength, success and good fortune.

An additional challenge for the design team was to produce a resort for all seasons, where comfort would not be sacrificed even during Dalian's cold winter. GHD worked on all facets of the design from the concept master plan through to detailed architectural and landscape design plans. While there is a heritage aspect to the design, environmental sustainability is an imperative for Shimao. GHD incorporated solar and wind power as well as an integrated water management system to reduce the resort's carbon footprint.



ANZAC Park West



Canberra Convention Centre