



CLIENTS | PEOPLE | PERFORMANCE

Oil & Gas - Brisbane 3D Modelling and Detailed Design Capabilities



The Oil & Gas Group in Brisbane uses AutoPLANT piping, which is a 3D piping system design and modelling application that runs on AutoCAD. It provides state of the art modelling capabilities.

It utilises a “spec-driven” design approach which maximises quality and efficiency by ensuring compliance with the applicable design criteria.

It enables the production of piping plans and piping sections, isometrics and Explorer “walk through” and clash detection and MTOs.



It has been successfully used on the following projects:

Enertrade (approx \$150m)

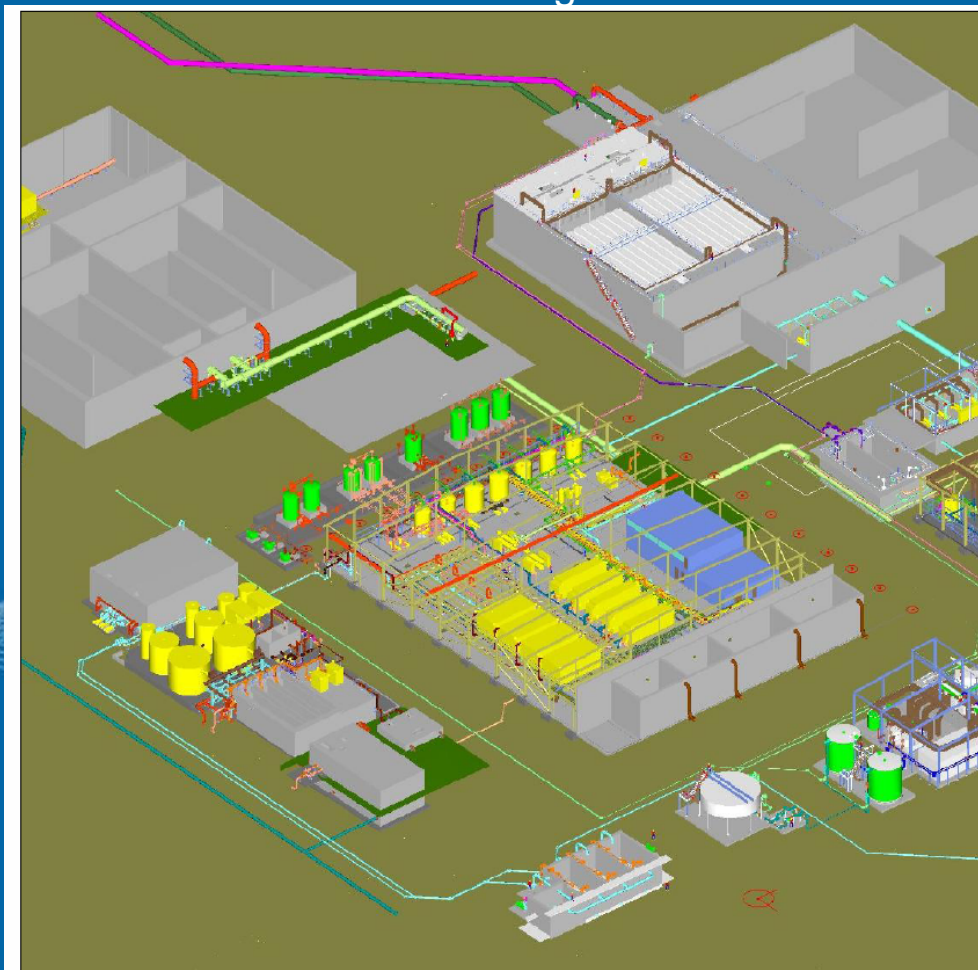
Mereenie (approx \$30m)

Co-generation (approx \$130m)

Bundamba 1A – Water Treatment Facility

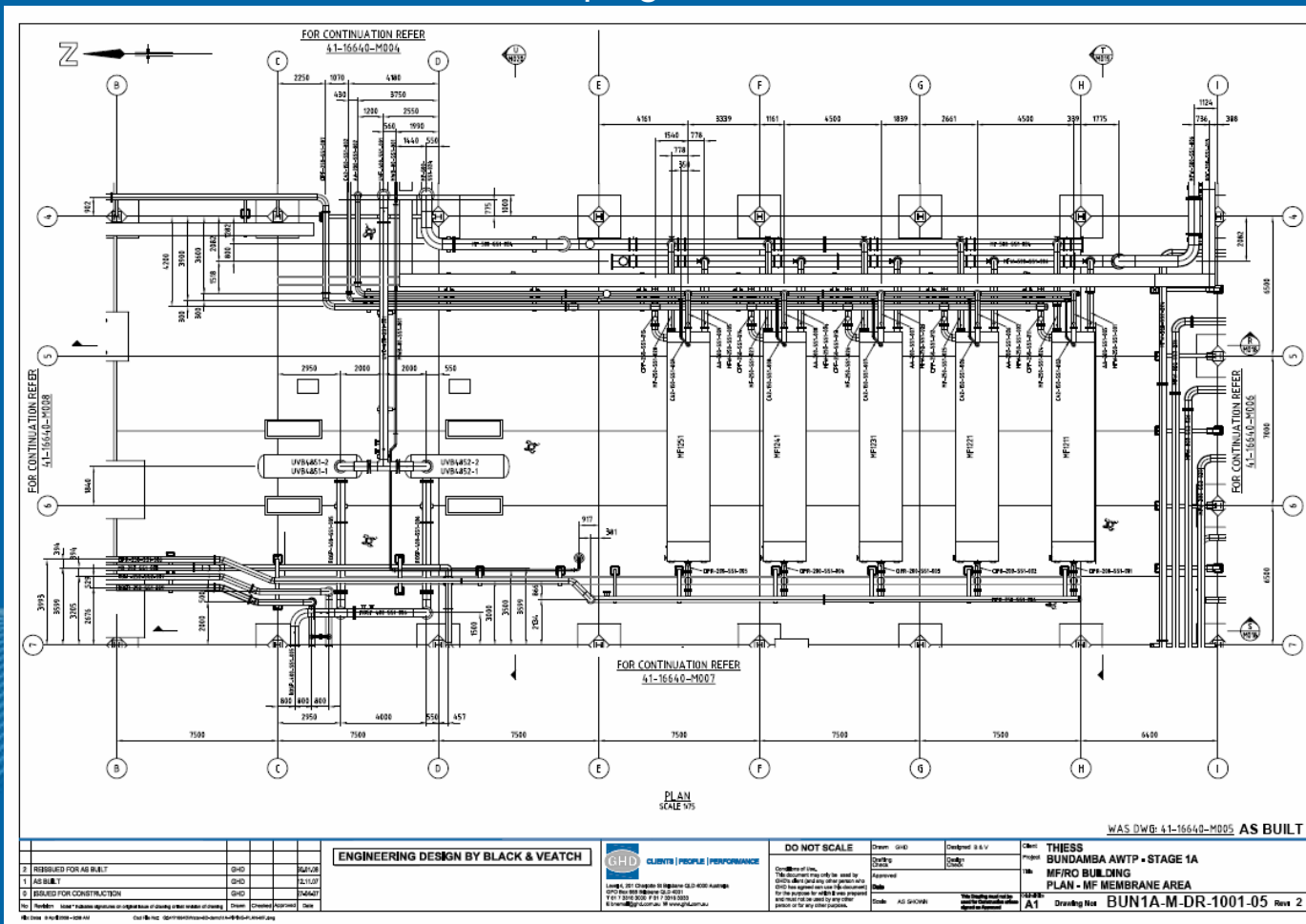
Bundamba 1B – Water Treatment Facility

'Walk Through'

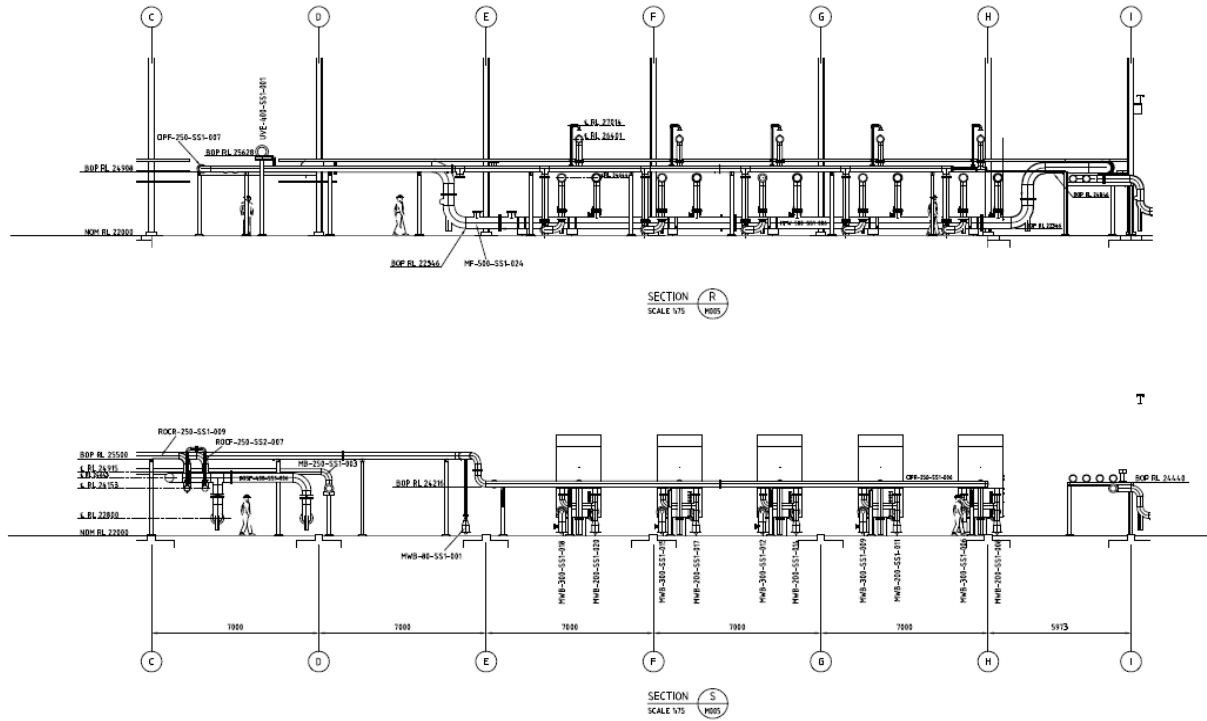




Piping Plans



Piping Sections



WAS DWG: 41-16640-M018 AS BUILT

2	REVISIONS FOR AS BUILT	QHD	17/07/20
1	AS BUILT	QHD	05/11/20
0	ISSUED FOR CONSTRUCTION	QHD	27/04/20

ENGINEERING DESIGN BY BLACK & VEATCH

CLIENTS | PEOPLE | PERFORMANCE

DO NOT SCALE

Drawn: QHD
 Checked: QHD
 Approved: QHD
 Date: 05/11/20
 Scale: A3 (1:1000)

Client: THJESS
 Project: BUNDAMBA AWTP - STAGE 1A
 Title: MF/RO BUILDING
 ELEVATIONS - MF MEMBRANE AREA - SECTIONS R, S
 Drawing No: BUN1A-M-DR-1001-18 Rev: 2

File Name: 41-16640-M018.dwg Date Plotted: 04/11/2020 10:00:00 AM Plotter: HP DesignJet T1100 Plot Size: A3 (1189x1651) Plot Scale: 1:1000



MTO

N:\A\BRISBANE\AUTOPLANT\MODELS\THIESS\BUNDAMBA_AWTP\PIPING\PIPING_ROC-WASTE-TANK-(74)

<u>Part No.</u>	<u>Schedule</u>	<u>SType</u>	<u>GType</u>	<u>Component Description</u>	<u>Nominal Size</u>	<u>Item Code</u>	<u>Quantity</u>
AA-013							
1	40S		PIP	PIPE SMLS SCH 40S BBE ASME B36.19M ASTM A312-TP316L	125mm		0.47 m
2	10S		PIP	PIPE SMLS SCH 10S BBE ASME B36.19M ASTM A312-TP316L	200mm		0.34 m
3	10S		PIP	PIPE SMLS SCH 10S BBE ASME B36.19M ASTM A312-TP316L	250mm		19.36 m
4	TABLE_E		EXJ	EXPANSION JOINT TABLE "E" FF	250mm X 0.24 m		1
5	10S	STR	TEE	TEE EQUAL SCH 10S BW ASME B16.9 ASTM A403-WP316L	250mm		4
6	10S	LR	45L	ELBOW 45 DEG LR SCH 10S BW ASME B16.9 ASTM A403-WP316L	250mm		4
7	10S	LR	90L	ELBOW 90 DEG LR SCH 10S BW ASME B16.9 ASTM A403-WP316L	250mm		3
8	TABLE_E	SLP	FLG	FLANGE SLIP-ON PLATE TABLE "E" FF AS 2129 316L	200mm		1
9	TABLE_E	BLD	FLG	FLANGE BLIND TABLE "E" FF AS 2129 316L	250mm		1
10	TABLE_E	SLP	FLG	FLANGE SLIP-ON PLATE TABLE "E" FF AS 2129 316L	250mm		14
11	TABLE_E		BOLT	STUD BOLT 3/4" x 165 LG ASTM A193-B8M-CLASS 2 C/W 2 HEX NUTS ASTM A194-8M	0.0 m X 0.17 m		36
12	TABLE_E		BOLT	STUD BOLT 3/4" x 95 LG ASTM A193-B8M-CLASS 2 C/W 2 HEX NUTS ASTM A194-8M	0.0 m X 0.10 m		48
13	PN10	SLP	FLG	FLANGE SLIP-ON PLATE RF BS 4504 PN10 316L	250mm		1
14	TABLE_E		GAS	GASKET TABLE "E" RING TYPE CNAF KLINGER "C6327" 1.5mm THK	250mm		10
15	3000LB		TOL	THREDOLET 250-150x25 3000LB THRD NPT-F MSS SP-97 ASTM A182-F316L	250mm X 25mm		2
AA-014							
16	40S		PIP	PIPE SMLS SCH 40S BBE ASME B36.19M ASTM A312-TP316L	125mm		0.47 m
17	10S		PIP	PIPE SMLS SCH 10S BBE ASME B36.19M ASTM A312-TP316L	200mm		0.34 m
18	10S		PIP	PIPE SMLS SCH 10S BBE ASME B36.19M ASTM A312-TP316L	250mm		4.69 m
19	TABLE_E		EXJ	EXPANSION JOINT TABLE "E" FF	250mm X 0.24 m		1
20	10S	LR	90L	ELBOW 90 DEG LR SCH 10S BW ASME B16.9 ASTM A403-WP316L	250mm		2
21	TABLE_E	SLP	FLG	FLANGE SLIP-ON PLATE TABLE "E" FF AS 2129 316L	200mm		1
22	TABLE_E	SLP	FLG	FLANGE SLIP-ON PLATE TABLE "E" FF AS 2129 316L	250mm		7
23	PN10		BOLT	STUD BOLT 3/4" x 105 LG ASTM A193-B8M-CLASS 2 C/W 2 HEX NUTS ASTM A194-8M	0.0 m X 0.11 m		12
24	TABLE_E		BOLT	STUD BOLT 3/4" x 165 LG ASTM A193-B8M-CLASS 2 C/W 2 HEX NUTS ASTM A194-8M	0.0 m X 0.17 m		12
25	TABLE_E		BOLT	STUD BOLT 3/4" x 95 LG ASTM A193-B8M-CLASS 2 C/W 2 HEX NUTS ASTM A194-8M	0.0 m X 0.10 m		48
26	PN10	SLP	FLG	FLANGE SLIP-ON PLATE RF BS 4504 PN10 316L	250mm		1
27	PN10		GAS	GASKET BS 4504 PN10 RING TYPE CNAF KLINGER "C6327" 1.5mm THK	250mm		1
28	TABLE_E		GAS	GASKET TABLE "E" RING TYPE CNAF KLINGER "C6327" 1.5mm THK	250mm		6
AA-015							
29	10S		PIP	PIPE SMLS SCH 10S BBE ASME B36.19M ASTM A312-TP316L	250mm		4.48 m
30	10S	LR	45L	ELBOW 45 DEG LR SCH 10S BW ASME B16.9 ASTM A403-WP316L	250mm		4
31	TABLE_E	SLP	FLG	FLANGE SLIP-ON PLATE TABLE "E" FF AS 2129 316L	250mm		3
32	TABLE_E		BOLT	STUD BOLT 3/4" x 165 LG ASTM A193-B8M-CLASS 2 C/W 2 HEX NUTS ASTM A194-8M	0.0 m X 0.17 m		24
33	TABLE_E		GAS	GASKET TABLE "E" RING TYPE CNAF KLINGER "C6327" 1.5mm THK	250mm		4

