

Welcome to this edition of the Bowen Portal, our quarterly newsletter, brought to you by North Queensland Bulk Ports Corporation Limited (NQBP).

In this edition, you can find out about various projects that are currently underway at Abbot Point including X25 and X50 expansions, studies investigating expansions to X110 and the Multi Cargo Facility. You can also read about the employment initiative that we are supporting as well as get the run down on the mini tourism expo that was held at the Merinda Village.

This newsletter will be produced on a quarterly basis in cooperation with the Bowen Independent. The next edition will be issued in January 2010.

We hope you find the information useful and we would very much like to hear your feedback. Please contact our office at communications@nqbp.com.au if you have any feedback or ideas for future stories.



Marine Turtle Foraging Habitat Assessment

The Giringun Aboriginal Corporation of Cardwell and Giru Dala Aboriginal Corporation of Bowen have recently completed a marine turtle training and foraging survey of the Bowen – Abbot Point region.

Given the present environmental climate and concern of marine threatened species, this survey will provide an opportunity to improve the current knowledge of these species in coastal Queensland waters and at a finer scale for the Bowen-Abbot Point region.

This survey will allow interpretation of species movements relative to habitat types which will be an important factor given the proposed future developments.

The objectives of the survey are to:

- Provide training and interpretation to Traditional Owner groups;

- Collect marine turtle foraging data along the rocky shelf south of the Abbot Point Coal Terminal;
- Collect standard physiological turtle data and tag individuals (without tags);
- Attach a satellite transmitter to a turtle in the Bowen-Abbot Point region for training with the transmission data being available to NQBP. The transmitter will likely be attached to a foraging turtle and provide spatial information on the feeding ecology for up to six months.



Port Expansion Update

X25

The onshore works program defined under the X25 expansion program wrapped up at the end of July with remaining offshore works to be considered in the context of the X50 Expansion. At present current throughput capacity remains at 21 Mtpa.

While there were many key features of the X25 expansion project, one in particular was the

construction of a second inloading stream. This stream allows the terminal to unload trains through either unloader and to unload two trains simultaneously, once QR complete the balance of the second rail loop. Two streams help to mitigate risk of unexpected down time by ensuring coal can continue to be received allowing consistent throughput.

Another key feature is the supply and installation of an automatic Wagon Vibrator. This vibrator automatically detects whether coal is sticking in the wagons and vibrates the wagon with a frequency that will dislodge the coal. This offers a considerable time saving and improved safety over the previous manual vibration methods.

X50



The X50 expansion at Abbot Point is well underway and on track to have an export capacity of 50 Mtpa by 2011.

The expansion includes the construction of a second berth located 2.9 kilometres offshore that will involve the installation of approximately 9,500 tonnes of

structural steel and a 2.9 metre conveyor along the jetty to transport the coal from the stockyard to the ships.

Also under construction is a new shiploader which will allow a ship to be loaded with coal at a peak rate of 7,200 tonnes per hour (tph).

NQBP has also commissioned four new stacker reclaimers for Abbot Point for a total investment of approximately \$135 million with the majority of fabrication occurring in Queensland. Each stacker-reclaimer machine will be designed to deliver a maximum of up to 8000 tph with the normal operating range to be about 6000 tph.

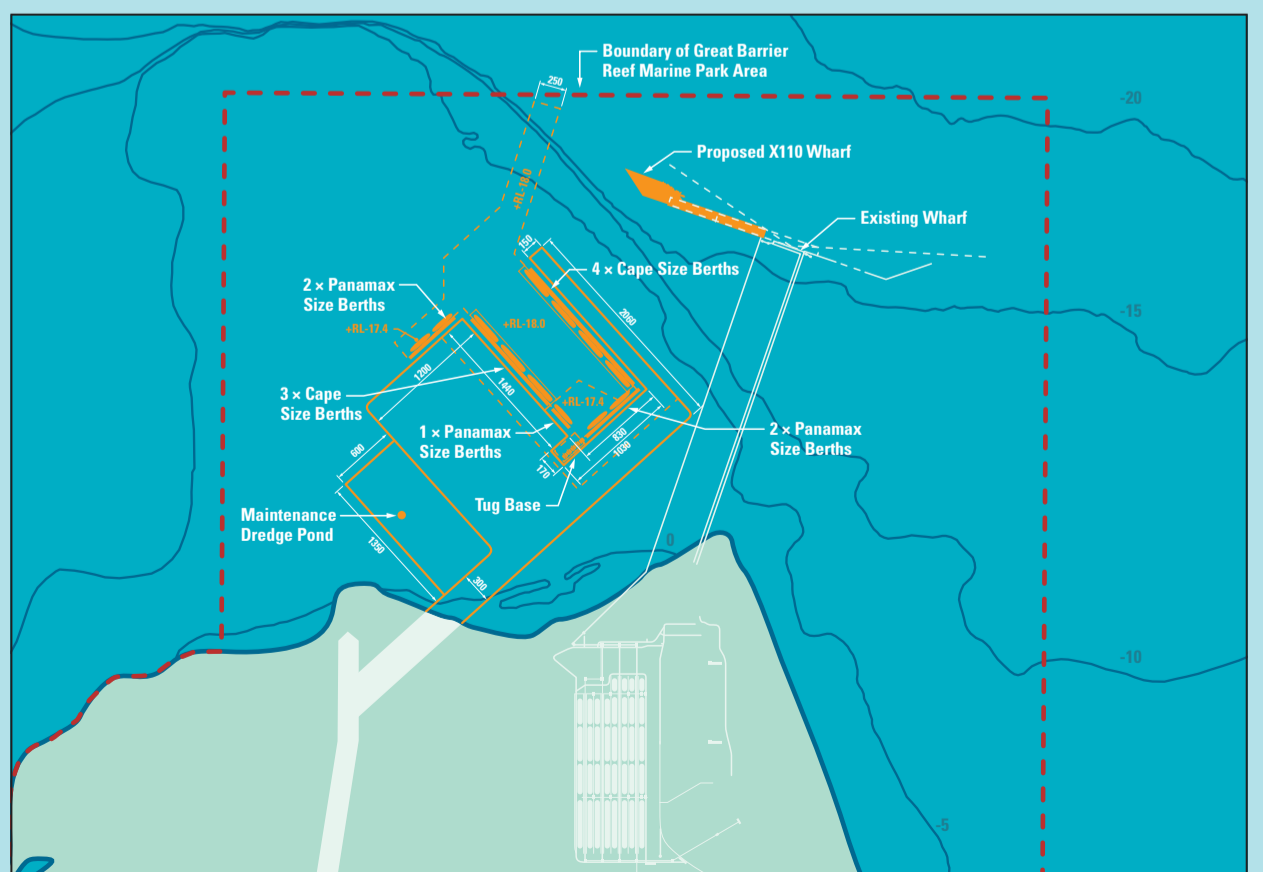
Multi Cargo Facility Project (MCF)

The MCF involves the construction of a protected harbour at Abbot Point capable of handling multiple cargoes. At its ultimate development, the facility will comprise approximately 320 hectares of reclaimed land developed to accommodate 12 shipping berths, a tug harbour and a dredged access channel, swing basin and berth pockets.

The MCF also includes the development of a construction haul road and port access road linking the proposed development to the Abbot Point State Development Area.

To ensure a high degree of environmental management, GHD Pty Ltd has been commissioned by NQBP to undertake the Environmental Impact Assessment (EIA) which is currently underway.

It is NQBP's vision that the creation of the MCF will make Abbot Point a premier port for Australia.



Mini Tourism Expo Hits Merinda Village

Bowen Tourism members were given an opportunity at their regular networking function to highlight their business to the residents of the Merinda Village accommodation.

The mini expo was held in July to provide a win/win situation for the Village residents and local tourism businesses.

NQBP's CEO, Brad Fish said it was a great opportunity to see first hand what is on offer to residents from within the local region to encourage them to experience the fantastic tourism offerings available.

Over 17 local business operators set up displays for the Village residents to view what is available, see what specials are on offer and start to plan a holiday for either themselves or their entire family when visiting the region.

"I congratulate Bowen Tourism for this Mini Expo initiative and thank the team for all their hard work in ensuring it was well attended and a great success," said Mr Fish.

Displaying at the Mini Expo were a wide range of local businesses including accommodation houses, real estate agents, hardware store, jewellers, cruise operators and many more.

Between Village residents, exhibitors and Tourism Bowen members and guests over 200 people attended the Mini Expo.

Merinda Village has a capacity for 392 guests with just on 200 currently in residence. Bowen Tourism members were given the opportunity to have a tour of Merinda Village to see first hand what Village life is all about.

"This is a wonderful way to ensure Village residents are participating in the local community and can only help to build on the good relationship which already exists between the Bowen community and the Village," said Mr Fish.



Bowen Tourism Chair, Paul McLaughlin said thanks to NQBP and Cater Care Services for giving us this terrific opportunity to promote our Members businesses as the Mini Expo was the first time we have attempted anything like this and it was a huge success.

If you have any questions about the mini expo, please contact our regional relationship manager, Matthew Magin on 4786 5396 or you can email him at mmagin@nqbp.com.au

Skilling Queenslanders for Worker Program

Six local Indigenous people have been engaged to complete a walking track along the Esplanade at Queens Beach. The project is a Skilling Queenslanders for Work (SQW) initiative with funding provided by the Department of Employment, Economic Development and Innovation.

Whitsunday Regional Council is hosting the participants and are providing on the job supervision and materials necessary to undertake the construction of the walking track. Bowen Lions have also been instrumental in getting this initiative underway and a significant contributor towards the cost of materials being used on the project.

The project was initially discussed with the Regional Indigenous Employment Programme (RIEP) Co-ordinator, Maria Conroy, earlier this year who subsequently engaged Mackay Area Industry Network (MAIN) to manage the project and conduct the off the job training components.

NQBP is the host organisation for the RIEP initiative which is aimed at assisting the Indigenous people of the region to find, secure and retain sustainable employment for the long term betterment of themselves, their families and the wider community.

Participants are all local to Bowen and acquiring skills that will assist them in applying for and securing future employment. All the participants were recruited through Girudala Community Co-operative's Training and Employment Support Programme (TESP).



Keith Payne, Patrick Payne, Taylor Paul, Brenton Sinn, Daniel Anderson, Scott Gaston, Petreia White, Fallon Nahow.

Contractors working on the Abbot Point Coal Terminal expansion project, John Holland Group have agreed to host participants in a work experience programme. Two participants have begun work experience at the terminal in late September where they have the opportunity to further develop their skills which will hopefully culminate in the offer of sustainable employment with John Holland Group.

Additionally Blue Diamond Constructions have been providing a number of participants with paid weekend work to further develop their skills and put into practice the theory and work experience being received through the SQW initiative. Subsequently two participants have been offered permanent work with Blue Diamond Constructions.



Brenton Sinn and Scott Gaston have been offered permanent work with Blue Diamond Constructions.

Abbot Point Coal Terminal X110 Project

NQBP have completed all the necessary studies to investigate the proposed expansion of the Abbot Point Coal Terminal to 110 million tonnes per annum (Mtpa) (known as the X110 Project).

The findings of the studies are now available for public review and comment through the notification of the Draft Voluntary Environmental Assessment (VEA).

Key findings include:

- The development of the bunds will result in the loss of approximately 58.1 ha of remnant vegetation. Approximately 9.96 ha of this vegetation has been categorised as 'Of Concern', requiring specific approvals and permits prior to clearing. The areas to be cleared are located adjacent to existing infrastructure and some have been extensively grazed and invaded by weeds.
- No conservation significant plant species were identified during the surveys. Clearing will result in the removal of 'common' plants only.
- The project will impact approximately 12.21 ha of the Caley Valley wetland fringe which is currently heavily grazed and highly disturbed. The areas to be impacted provides low habitat value and no nesting sites were observed during surveys.
- The proposed stormwater management plan for the X110 expansion more than doubles the capacity of the existing water management system. This system minimises the frequency of discharge to the wetland and it is not predicted that the expanded coal terminal will result in changes to the wetland integrity and habitat value.

- Most fauna species recorded in the study area are relatively common in the coastal, woodland and open-forest environments. Previous studies have identified twelve listed terrestrial fauna species (two mammal, one reptile and nine bird species) that have been recorded, or are predicted within the study area. Only four bird species were identified during field surveys.
- The proposed footprint is located adjacent to the existing coal terminal and areas that have previously been cleared. As such, areas of habitat will not be further fragmented by the proposed X110 Expansion. Limited direct impact to fauna is expected from the Project. Fauna spotters will be employed during clearing works to minimise the potential for animals being caught or harmed.
- Air and noise projections are within current guidelines. Water sprays are included in the project design to minimise the amount of dust being produced by the Project.
- Areas of cultural heritage significance have been identified through consultation with the Traditional Owners of the area. These areas will be managed through a Cultural Heritage Management Plan to be finalised prior to commencement of the project construction.
- The X110 project will take the operational workforce at Abbot Point to approximately 280 people.

A key element of the VEA is the Environmental Management Plan, which sets out management measures which must be incorporated into the detailed design of the project and implemented through construction and operation of the expanded coal terminal. NQBP will be obtaining the relevant Commonwealth and State government permits to undertake the construction and operation of the expanded X110 coal terminal.

Have your say

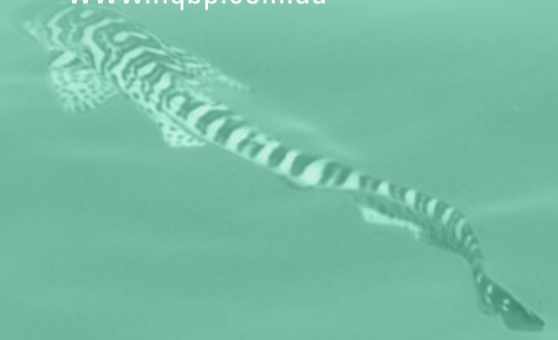
The X110 Infrastructure Development Project Voluntary Environmental Assessment (VEA) will be publicly notified for a period of four weeks commencing 10 October 2009.

Members of the Project Team will be available at a Community Display of the X110 VEA on Tuesday 13 October 2009 at the TAFE in Bowen from 2 – 7 pm.

All comments received on the VEA will be considered by NQBP in finalising the documentation to be provided to Approval Agencies of the development of the Project.

A copy of the Draft VEA may be obtained by downloading from either of the websites below:

- www.ghd.com.au/X110Expansion/index.html
- www.nqbp.com.au



Abbot Point Exclusion Zone

NQBP is currently working towards introducing a 50 metre exclusion zone around the Abbot Point Coal Terminal.

This new rule will come into effect to ensure safety within the port limits is maintained. Throughout the coming months, NQBP will be advertising the new port rules and carrying out consultation with members of the community that will be most impacted by the new rule.

No person or persons, unless authorised to do so, shall:

- moor any vessel under or adjacent to the wharves or jetty structures;
- navigate any vessel in the vicinity or under the wharves or jetty structures; or
- be on, under or in the vicinity of the wharves or jetty structures whether aboard a vessel or otherwise.

In this Rule:

- wharves and jetty structures means the Abbot Point Coal Terminal offshore facilities;
- vicinity means within a distance of 50 metres from the wharves or jetty structures.
- vessel has the meaning given by the *Transport Operations (Marine Safety) Act 1994*.

If you would like more information on the introduction of the exclusion zone, please contact our Commercial team on 3224 7088.

We hope you enjoyed this edition of the Bowen Portal. Look out for our next edition from NQBP!

If you are interested in writing an article in the next edition, please contact the corporate relations team on (07) 3224 8863 or email us at communications@nqbp.com.au



Level 24, 300 Queen Street
Brisbane Queensland

GPO Box 409
Brisbane QLD 4001

Phone 07 3224 7088
Facsimile 07 3224 7234

info@nqbp.com.au
www.nqbp.com.au

North Queensland Bulk Ports Corporation Limited
ACN 126 302 994
ABN 49 657 447 879