

1. Introduction

1.1 Background

The Oxley Highway to Kempsey project commenced route options development in November 2004.

Four feasible route options (Blue, Green, Purple and Orange) were placed on public display in October and November 2005.

These options were assessed at a value management workshop in December 2005 and a recommendation made for the preferred route subject to resolution of a number of issues (refer to Section 7 of the preferred route report).

A refined Orange option was developed for Sections A and B to address some of the issues raised at the value management workshop, and was subject to further investigations.

A project team route selection workshop was conducted in March 2006, which assessed the five options (Blue, Green, Purple, Orange and refined Orange) and a recommendation made in regards to a preferred route, which included the refined Orange option in Section B.

The RTA determined that the following option be recommended to the Minister for Roads to progress the project to the next phase. The preferred route displayed in August 2006 for each project section is summarised in the table below and shown on the following figure.

Preferred Route

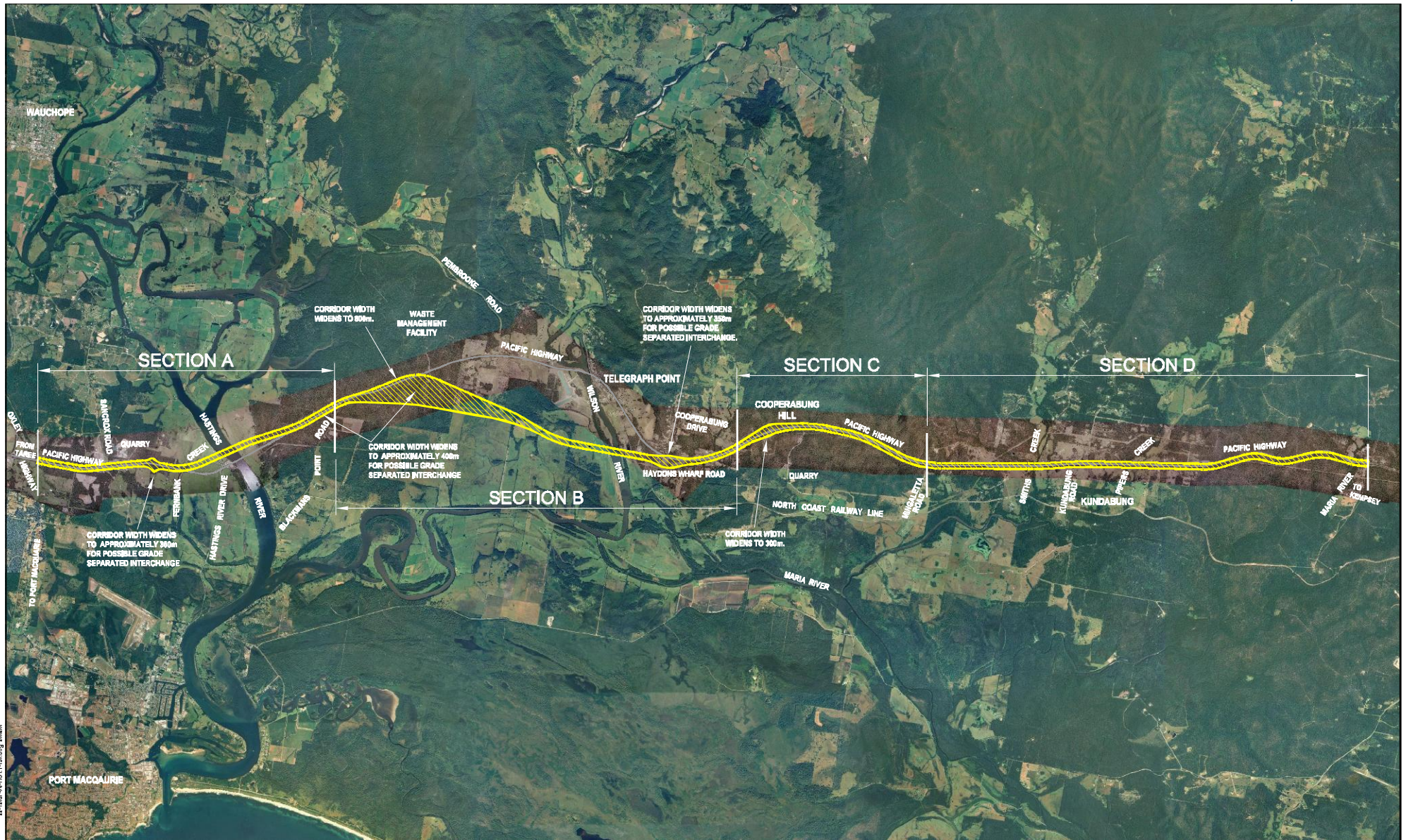
Section	Section Description	Preferred Option
A	700m north of Oxley Highway Interchange to Blackmans Point Road	Orange option
B	Blackmans Point Road to Cooperabung Drive	Combination of Orange and refined Orange options including a wider corridor through Cairncross State Forest
C	Cooperabung Drive to Mingaletta Road	Blue / Green / Purple option
D	Mingaletta Road to Maria River	Blue option

A wider preferred route corridor was adopted through Cairncross State Forest in Section B of the project to allow further investigations and assessment so as to position an alignment that has least impact on koala habitat, Cairncross State Forest, agricultural, private property and utilities.

Following approval of the Minister for Roads the preferred route including a wide corridor section was displayed in August, September and October 2006.

The project team has undertaken further investigations since the preferred route display to refine the preferred route.

“This page is intentionally blank”



22-1287-4-EP01-1-16-000 20/07/20

<p>0 1 2 3 Kilometres</p> <p>Map Projection: Universal Transverse Mercator Horizontal Datum: Geocentric Datum of Australia 1984 Grid: Map Grid of Australia, Zone 56</p>		<p>LEGEND</p> <p> 150m wide and variable Corridor</p>	
--	--	--	--

Spatial layers courtesy of Port Macquarie - Hastings Shire Council, Kempsey Shire Council, NSW Department of Environment and Conservation, NSW Forests, NSW Department of Lands and NSW Roads and Traffic Authority