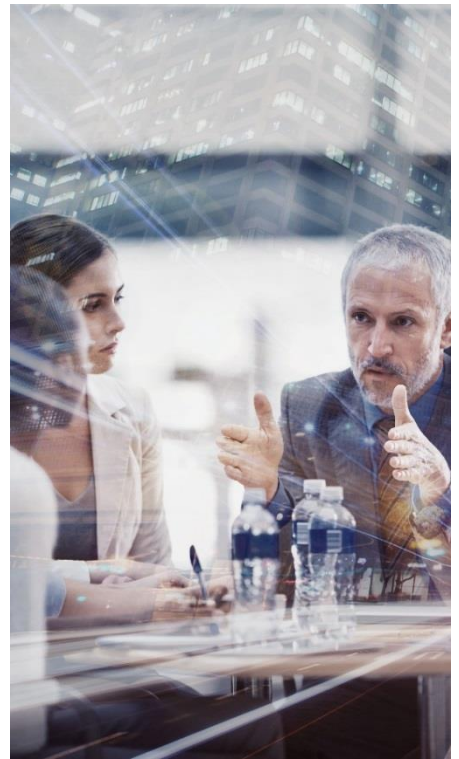


# Asset Management ISO 55001 Planning and Implementation



We have assisted clients for over 30 years to implement their asset management systems. Our teams have contributed to the development of the ISO 55001 standard and authored industry-specific guidelines for its implementation.

GHD Advisory takes organizations asset management practices to the next level by enabling better decision-making, risk management, business and customer value.



## Assessment and improvement plans

GHD Advisory has completed over 500 Asset Management maturity assessments and gap analyses against leading frameworks including ISO 55001, PAS 55 and other industry based frameworks. We have developed and managed implementation of associated improvement programs and built long-term relationships with many clients, periodically reviewing their asset management systems, updating improvement plans, driving continuous improvement and benefits realization.

### Key benefits

- Audits and reviews are conducted systematically and apply quality systems-based methodologies to make sure the audit and review is rigorous and develops sound insights and clear observations that can be translated into specific improvements
- Appropriate document and data management protocols support these methodologies
- Audits and reviews are conducted in a consultative manner, from onsite interviews with pre-developed questions to enable clients to adequately prepare
- Balanced reporting is provided, whereby both positive and effective outcomes are recognized, as well as improvement opportunities identified.

## Planning and program implementation

Our experience from working with multiple clients in the United States, Canada and internationally is that implementation requirements can differ in complexity depending on the asset mix and risk environment applicable to the industry. Our overall methodology is consistent applied through program planning, implementation, readiness assessment and then program completion.

### Key benefits

- Experienced judgment is applied to consider the specific circumstances of the client in terms of its functions, asset portfolio, geographic coverage, and culture, and in considering the extent of sophistication required which is linked to industry risk environments
- Implementation is integrated and driven by the organization
- GHD Advisory embeds experienced consultants in key program management and project implementation roles
- The lessons learned are to be flexible and to provide advice on the optimum mix which is most cost effective
- We draw on our broader GHD network (providing the technical expertise necessary) to support you through the planning, implementation and delivery phases of the project.

## Integration

GHD Advisory is an integrated part of the GHD network. We combine operational and commercial capability with 90 years of technical engineering expertise. This allows us to support our clients from opportunity identification to planning, implementation and benefit delivery across operations, maintenance, technical services and asset management.

## Global presence

Our global presence allows us to draw on an international pool of resources and hand pick teams with the ideal mix of skills and experience to successfully deliver projects.

## Cross industry exposure

Every industry follows a different standard framework. GHD Advisory offers the support of practitioners experienced in each industries' unique framework, but more importantly insights and opportunities from our consultants with broader cross industry commercial experience.

## Outcomes

### City of Barrie

GHD has been assisting the City of Barrie since 2009 to establish an Asset Management (AM) program. In 2016, the City retained GHD to review its AM progress, update its AM strategy for the next five years and provide recommendations for an appropriate AM governance structure to guide the City's AM Strategy implementation to 2022. Key outcomes included:

- Establishing a State Of the Assets Report (SOAR) to benchmark asset performance and facilitate communication with the City's Council and the Public
- A gap analysis in line with the ISO 55000 Standard for AM to identify opportunities to improve AM maturity related to people, processes, data and technology
- Providing recommendations for an AM governance model to support ongoing implementation and sustenance of the City's AM Program and culture as well as updating the City's AM Strategy to 2022.

### New York City Metropolitan Transportation Authority (MTA)

MTA Bridges & Tunnels (B&T) is actively developing its capability in AM. The agency has a stretch target of achieving competency with all aspects of ISO 55000 by the end of 2018, with a longer-term goal of excellence by 2020. B&T has adopted a new business model proposed by GHD, designed to transform the agency into a world class organization which concentrates on three key performance areas: Customer Service, Revenue Collection and Safety. GHD's prior performance of an ISO 55000 gap assessment supported B&T's improved AM knowledge and capability.

Working with the agency since 2013, our team has delivered a series of foundation projects to commence the implementation of B&T's AM improvement program; including arrangements to gain executive support and establish leadership for the emerging AM program.

Our team is providing technical support to establish cross-functional teams, provide technical input, coaching, training and business process improvement. GHD developed a presidential policy and established an integrated business risk program. Establishing an AM information system architecture was key in improving the sharing of asset data across systems, allowing for strategic and tactical decision-making.

## ISO 55001 services include:

- Maturity Assessments and Gap Analysis
- Program Implementation Planning
- Asset Management System Development
- Integrated Management Systems (Governance, Risk, Safety and Quality)
- Asset Management Objectives/Levels of Service
- Strategic Asset Management Plans, Asset Class/Facilities Plans
- Lifecycle Analysis
- Assurance (Monitoring, Evaluation, Management Review, Audit)
- Program Implementation Management
- Competency Requirements
- Training and Awareness (Culture, Communication, Knowledge)
- Capital Evaluation and Prioritization
- Planning and Reporting Systems
- Business Cases and Technical Engineering studies
- Asset Management Processes and Tools (RCM, Risk Assessment, Option Analysis etc.)
- Capital Renewals and Expenditure Forecasting
- Asset Hierarchy/Register Structure and Data Requirements
- Asset Management Information Systems
- ISO 55001 Certification Readiness

For more information about how GHD Advisory can drive value for your business, email us at [advisory@ghd.com](mailto:advisory@ghd.com) or contact:

Roop Lutchman, Peng, PMP  
North America Market Development Leader  
GHD Advisory

[roop.lutchman@ghd.com](mailto:roop.lutchman@ghd.com)  
T +1 905 752 4326

Aman Singh, Peng, PMP  
Service Line Leader  
Asset Management

[aman.singh@ghd.com](mailto:aman.singh@ghd.com)  
T +1 905 752 4307